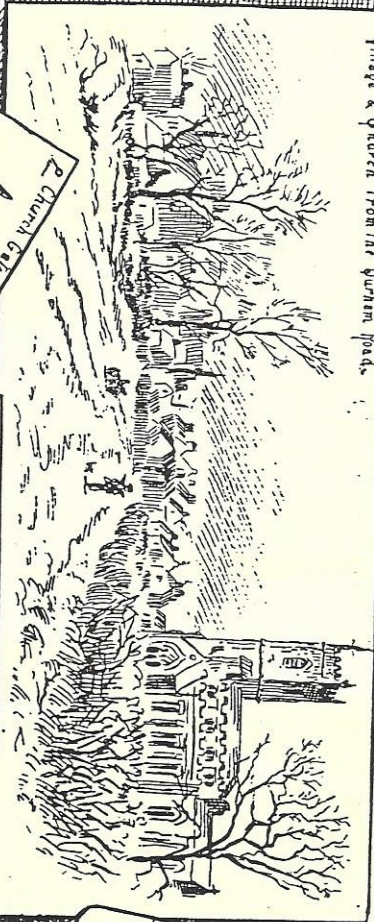
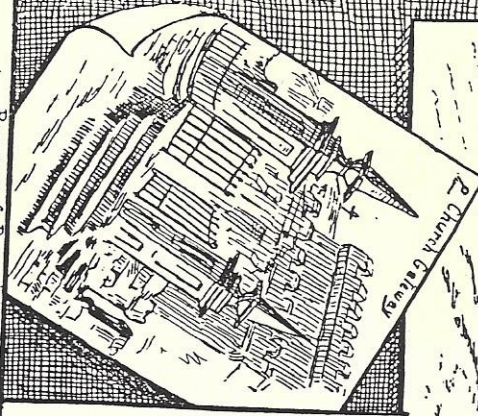




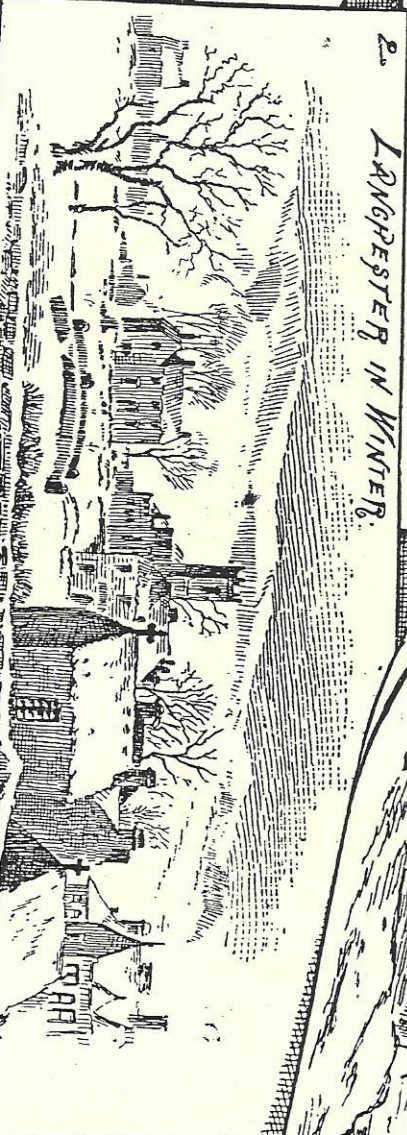
Village & Church from the Durham Road.



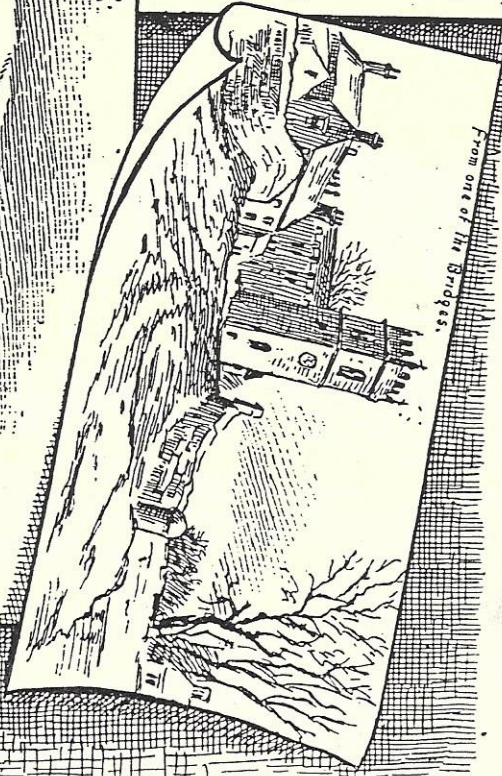
Church Gates



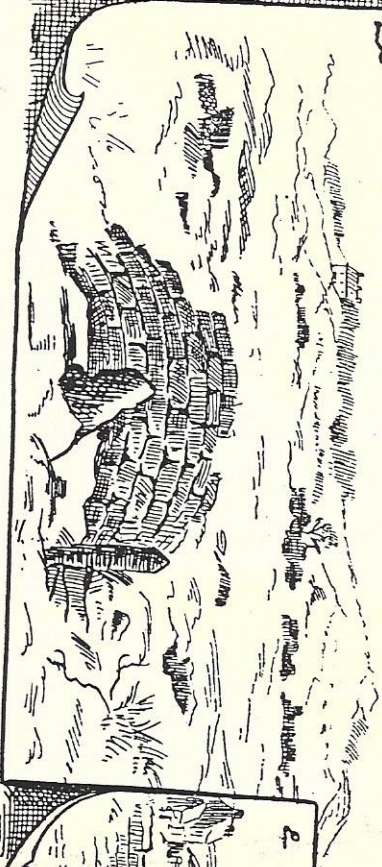
LANGFESTER IN WINTER.



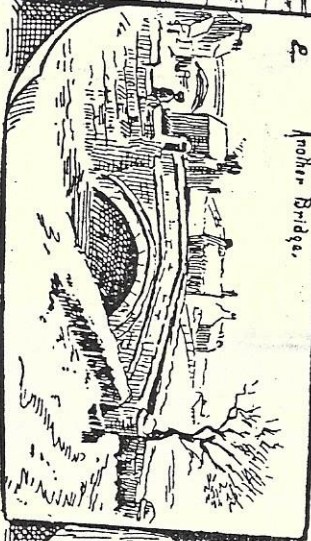
From one of the Bridges.



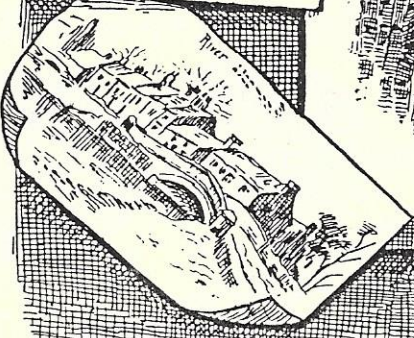
Remains of Roman Camp.



From the Railway Station.

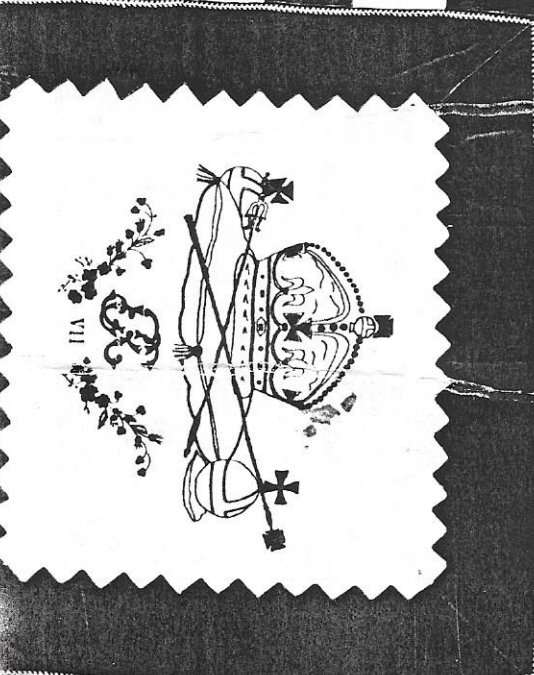


Another Bridge.



SKETCHES  
FROM  
BY JOHN  
WILKES

Handwritten names on a checkerboard grid, including: M. E. Bell, T. Bell, J. Bell, M. Bell, G. Bell, H. Bell, K. Bell, L. Bell, N. Bell, O. Bell, P. Bell, Q. Bell, R. Bell, S. Bell, T. Bell, U. Bell, V. Bell, W. Bell, X. Bell, Y. Bell, Z. Bell.



Handwritten names on a checkerboard grid, including: M. E. Bell, T. Bell, J. Bell, M. Bell, G. Bell, H. Bell, K. Bell, L. Bell, N. Bell, O. Bell, P. Bell, Q. Bell, R. Bell, S. Bell, T. Bell, U. Bell, V. Bell, W. Bell, X. Bell, Y. Bell, Z. Bell.

Vertical handwritten text on the right side, including: W. Bell, D. P.

